

Whelk-O[®] 1

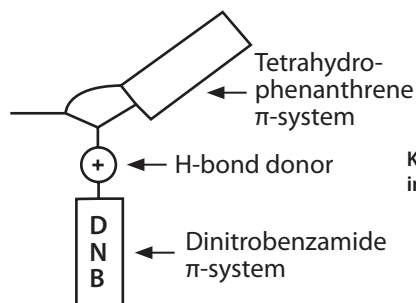
Chiral Stationary Phase

Advance Your Chiral
Method Development in
HPLC or SFC

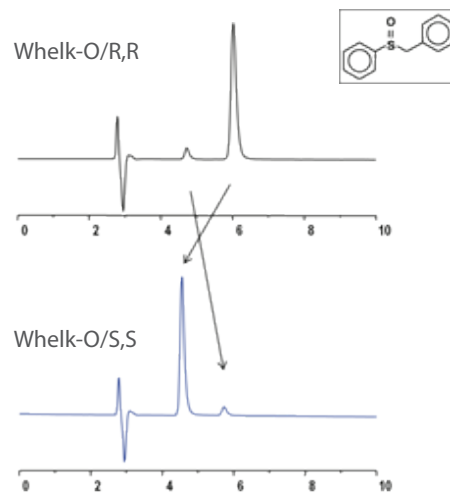
- Excellent method development column with applicability to a wide range of compound classes
- Alternate selectivity compared to polyssaccharide chiral stationary phases
- High loading capacity for excellent scalability in HPLC and SFC for preparative applications
- Invert peak elution order with availability of both enantiomeric phases for difficult separations
- Diverse range of particle size choices and dimensions to fit any purpose
- Stable, long term performance for analytical and preparative applications

Chemistry

General purpose Pirkle-type chiral phase designed to achieve selectivity through pi-pi interactions, dipole moment, hydrogen bonding interactions, and additional selectivity based on structure. Fully endcapped and bonded to high purity silica. Covalent bonding makes it compatible with all commonly used mobile phases, including aqueous systems. This column can be used in both normal phase and reversed phase.



Key functional groups of the Whelk-O 1 involved in chiral recognition



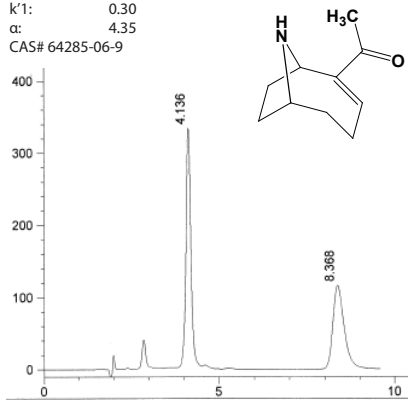
Inversion of elution order on Whelk-O S,S and R,R

Applications

- Chiral Screening
- Quality Control and Quality Assurance
- Chiral Purifications in Drug Discovery & Development
- Agricultural and Food Safety
- Animal Health

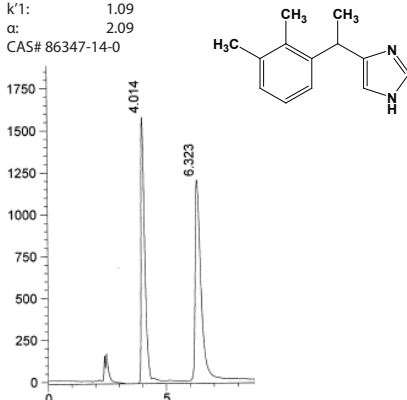
Anatoxin - A

Column: Whelk-O 1- 5 μ m 25 cm x 4.6 mm
Cat#: (S,S)-#780101
(R,R)-#780201
Mobile Phase: (70/30) Hexane/Ethanol + 0.1% TFA
Flow Rate: 1.5 mL/min
Detection: UV 227 nm
k¹: 0.30
 α : 4.35
CAS# 64285-06-9



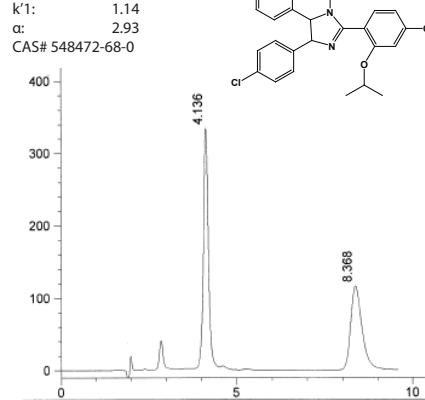
Medetomidine

Column: Whelk-O 1 5 μ m 25 cm x 4.6 mm
Cat#: (S,S)-#780101
(R,R)-#780201
Mobile Phase: (75/25) Hexane/IPA + 0.1% DEA
Flow Rate: 1.5 mL/min
Detection: UV 220 nm
k¹: 1.09
 α : 2.09
CAS# 86347-14-0



Nutlin-3

Column: Whelk-O 1 5 μ m 25 cm x 4.6 mm
Cat#: (S,S)-#780101
(R,R)-#780201
Mobile Phase: 100% Methanol
Flow Rate: 1.5 mL/min
Detection: UV 254 nm
k¹: 1.14
 α : 2.93
CAS# 548472-68-0



Product Ordering Information

Phase Type S,S	Column Length (mm)	Column ID (mm)	Particle Size (μm)	Part #
(S,S) Whelk-O1	50	2.1	3.5	1-780128-300
(S,S) Whelk-O1	50	2.1	5	1-780155-300
(S,S) Whelk-O1	100	2.1	3.5	1-780129-300
(S,S) Whelk-O1	100	2.1	5	1-780154-300
(S,S) Whelk-O1	50	4.6	3.5	1-780120-300
(S,S) Whelk-O1	50	4.6	5	1-780152-300
(S,S) Whelk-O1	100	4.6	3.5	1-780121-300
(S,S) Whelk-O1	100	4.6	5	1-780151-300
(S,S) Whelk-O1	150	4.6	5	1-780105-300
(S,S) Whelk-O1	250	4.6	5	1-780101-300
(S,S) Whelk-O1	250	21.1	5	1-780107-300
(S,S) Whelk-O1	250	21.1	10	1-786635-300
(S,S) Whelk-O1	250	50	10	1-786703-300

Phase Type R,R	Column Length (mm)	Column ID (mm)	Particle Size (μm)	Part #
(R,R) Whelk-O1	50	2.1	3.5	1-780228-300
(R,R) Whelk-O1	50	2.1	5	1-780255-300
(R,R) Whelk-O1	100	2.1	3.5	1-780229-300
(R,R) Whelk-O1	100	2.1	5	1-780254-300
(R,R) Whelk-O1	50	4.6	3.5	1-780220-300
(R,R) Whelk-O1	50	4.6	5	1-780252-300
(R,R) Whelk-O1	100	4.6	3.5	1-780221-300
(R,R) Whelk-O1	100	4.6	5	1-780251-300
(R,R) Whelk-O1	150	4.6	5	1-780205-300
(R,R) Whelk-O1	250	4.6	5	1-780201-300
(R,R) Whelk-O1	250	21.1	5	1-780207-300
(R,R) Whelk-O1	250	21.1	10	1-786335-300
(R,R) Whelk-O1	250	50	10	1-786709-300

Additional column dimensions available upon request.

Make Whelk-O1 your first choice for chiral separations!

Learn more, visit: www.registech.com/whelk-O1



www.RegisTech.com

About Regis Technologies, Inc

Regis Technologies, Inc. is a privately held company that provides synthesis and separations services to the pharmaceutical, biotechnology and other related industries. Regis provides innovative chromatography products and services, especially those with a chiral emphasis, through the utilization of our extensive organic expertise and collegiate collaborations. For more information, please visit www.RegisTech.com